

2017 FACT BOOK



Carmella Sanchez
Director of Institutional Research
505 747.2118
carmella@nnmc.edu

NORTHERN New Mexico College



Northern New Mexico College is proud to present its eighth annual Fact Book publication. This document is compiled by the Office of Institutional Research. It contains profiles on student enrollment, degree offerings, financial data, and employees. The data in this publication is compiled using the most recent academic school year (fall, spring, and summer terms) and the most recent fall census report. All data is collected and maintained using Banner. The intent of this publication is to provide an accurate and consistent reference for use by various internal and external stakeholders. This effort intends to not only provide quick and easy access to institutional data but also to open-up new ideas and questions.

If you have questions or comments regarding this publication, please feel free to contact us by email at Carmella@nmmc.edu.

Thank you



Northern New Mexico College

VISION

Northern New Mexico College is a Hispanic- and Native American-serving comprehensive institution that will be recognized nationally for cultural sustainability, quality student learning and developing economically strong communities among diverse populations.

MISSION

The mission of Northern New Mexico College is to ensure student success by providing access to affordable, community-based learning opportunities that meet the educational, cultural, and economic needs of the region.

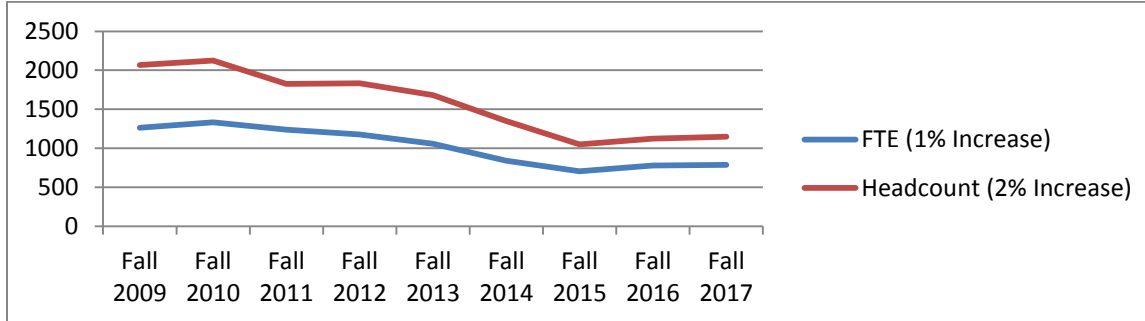
Table of Contents

<i>Student Enrollment</i>	<i>3</i>
<i>Employees</i>	<i>3</i>
<i>Budget</i>	<i>4</i>
<i>Community Service</i>	<i>5</i>
<i>Remediation</i>	<i>6</i>
<i>Credit Enrollment</i>	<i>6</i>
<i>Enrollment Trends</i>	<i>8</i>
<i>Characteristics of Students</i>	<i>8</i>
<i>Residency</i>	<i>10</i>
<i>High School Recruitment</i>	<i>11</i>
<i>Degrees and Majors</i>	<i>12</i>

Current Facts

Student Enrollment

Source: Fall 3rd Week Enrollment Registrar's Report



Employees

Human Resources Report (As of October 18, 2017)

	Full-Time Faculty Fall 17 (n=38)	Part-Time Faculty Fall 17 (n=51)
White	37%	41%
Black	0%	2%
Hispanic	42%	29%
American Indian	0%	4%
Asian	10%	0%
Non-Resident Alien	0%	0%
Unknown/Other	11%	24%
Total	38	51

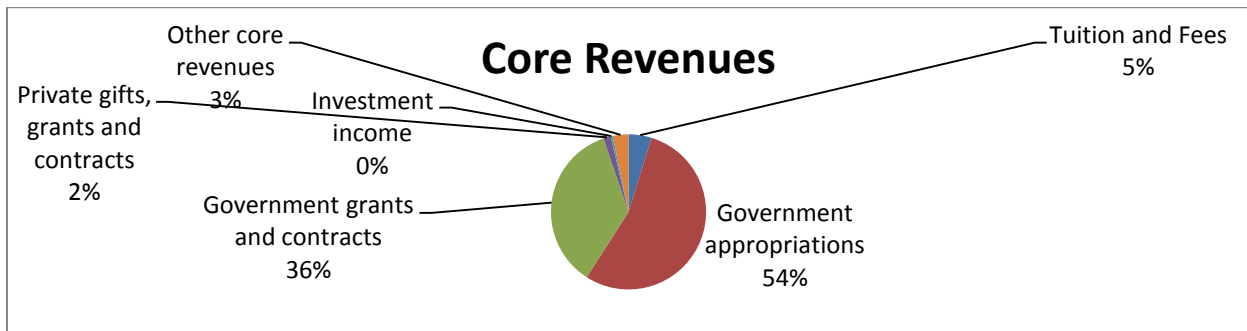
Human Resources Report (As of October 18, 2017)

	Full-Time Staff (Fall 2017)	Part-Time Staff (Fall 2017)
Administration	7	0
Staff	102	4

Budget (Source: IPEDS: 2016-17 Finance Report on Fiscal Year: July 1, 2015 - June 30, 2016)

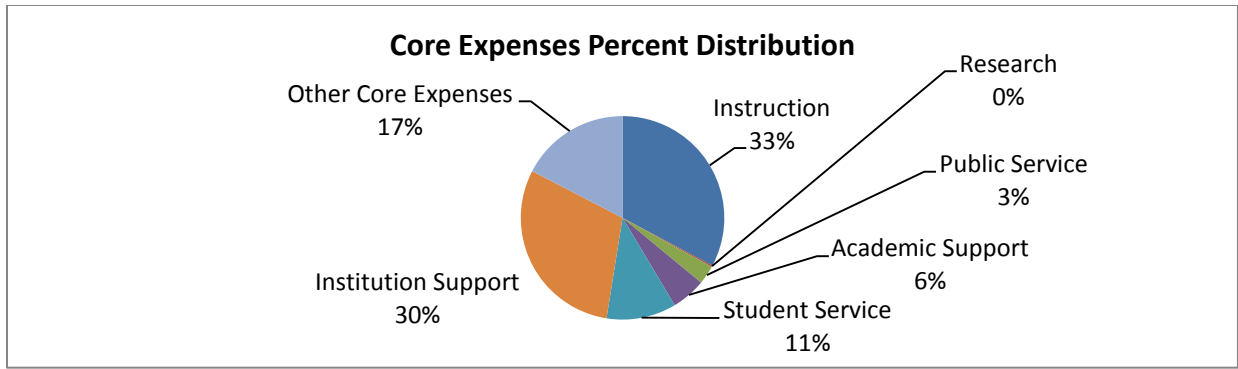
Core Revenues (to be updated 4/2018)	Total	Per FTE Enrollment
Tuition and Fees	\$1,016,196	\$1,198
State appropriations	\$11,472,900	\$13,529
Government Grants and Contracts	\$7,552,664	\$8,906
Private Gifts Grants and Contracts	\$324,314	\$382
Investment Income	-\$89,283	-\$105
Other Core Revenues	\$694,985	\$820

Other core revenues include federal appropriations; sales and services of educational activities; other operating and non-operating sources; and other revenues and additions (e.g., capital appropriations, capital grants and gifts, etc.). Core revenues exclude revenues from auxiliary enterprises (e.g., bookstores, dormitories), hospitals, and independent operations.



Core Expenses (to be updated 4/2018)	Total	Per FTE Enrollment
Instruction	\$5,991,294	\$7,065
Research	\$41,419	\$49
Public Service	\$546,226	\$644
Academic Support	\$996,959	\$1,176
Student Service	\$2,028,199	\$2,392
Institution Support	\$5,501,894	\$6,488
Other Core Expenses	\$3,182,001	\$3,752

Other core expenses include scholarships and fellowships, net of discounts and allowances, and other expenses. Core expenses exclude expenses from auxiliary enterprises (e.g., bookstores, dormitories), hospitals, and independent operations.



Community Service Offerings and Projects

Based on 2016-17 data, the list below provides information on community service course offerings and enrollments. There is also information on special community projects and events with numbers of participants.

Sampling of Offerings	Number of participants	Sampling of Special Projects for the Community
Adult Education	76	The Adult Education Program offers the opportunity for students to take and pass the High School Equivalency exam and obtain what is known as the GED®. The program also offers English as a Second Language (ESL). Overall, the program assists adults in becoming more literate and improving their educational and employability skills.
Continuing Education	425	NNMC Continuing Education offers personal enrichment courses each semester. These numbers reflect CE/CS course enrollments for 2016-17. Courses include: Spanish Colonial Wood Working; Spanish Colonial Furniture Making; Weaving; Dancing; ArcView GIS; Serve Safe; Excel; Computer Literacy; Know your retirement, Stocks and Investments, First/CPR.
SBDC	152 clients consulted 14 training events with 102 attendees	SBDCs help Small Business, grow, create jobs and retain jobs America’s SBDC is a local, national, global business resource. SBDC at NNMC is a national accredited business assistance program offering no-cost business consulting and low-cost business training for all types of business at all stages of business development. Focusing on job creation, growing business, new businesses and economic development. SBDC certified business consultants help provide local businesses and entrepreneurs with the resources they need to thrive compete and succeed and have access to National and International Partners. For fiscal year 2016 SBDC at NNMC was awarded the states “Job Creator of the Year”. Eighteen new businesses created; 197.5 jobs created; 225 jobs retained; 1001.42 consulted hours with clients , assisted in 36 Capital Loans & Equity total \$5,175,700.00
High School Equivalency Program (HEP)	80 students per year	The High School Equivalency Program (HEP) helps migrant and seasonal farmworkers (or children of such workers) who are 16 years of age or older and not currently enrolled in school obtain the equivalent of a high school diploma and, subsequently, to gain or upgrade employment, begin postsecondary education or training, or enlist in the military.

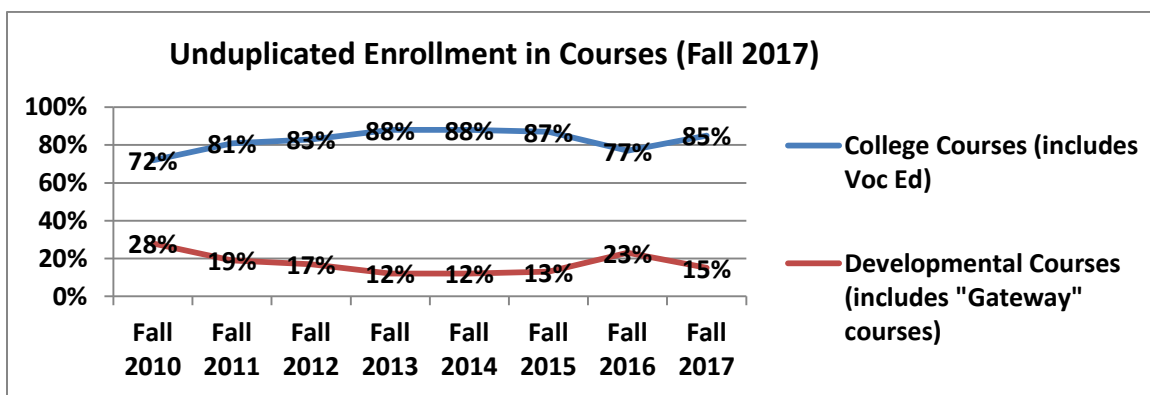
		<p>NNMC's High School Equivalency Program (HEP) has been ranked the best in the nation for 2016, according to a newly released report by the Department of Education. Northern's HEP achieved a 96 percent graduation rate, the highest among the 43 High School Equivalency Programs operating nation-wide. The national average for graduation from HEP is 68 percent.</p> <p>The program has also excelled with 96 percent of graduates entering postsecondary education or training, upgraded employment, or the military. The national average is 81 percent.</p>
--	--	------------------------------------------------------------------------------------------------------------------------------------------------------------------------------------------------------------------------------------------------------------------------------------------------------------------------------------------------------------------------------------------------------------------------------------------------------------------------------------------------------------------------------------------------------------------------

Remediation

Total Number of FTAC (First time Any College) students, Fall 2017 = 156

- Percent of FTAC taking one or more developmental courses: 76%
- Percent of FTAC taking developmental Math, Fall 2017: 18%
- Percent of FTAC taking developmental English, Fall 2017: 19%
- Percent of FTAC taking developmental Math and developmental English, Fall 2017: 39%

Credit Enrollment

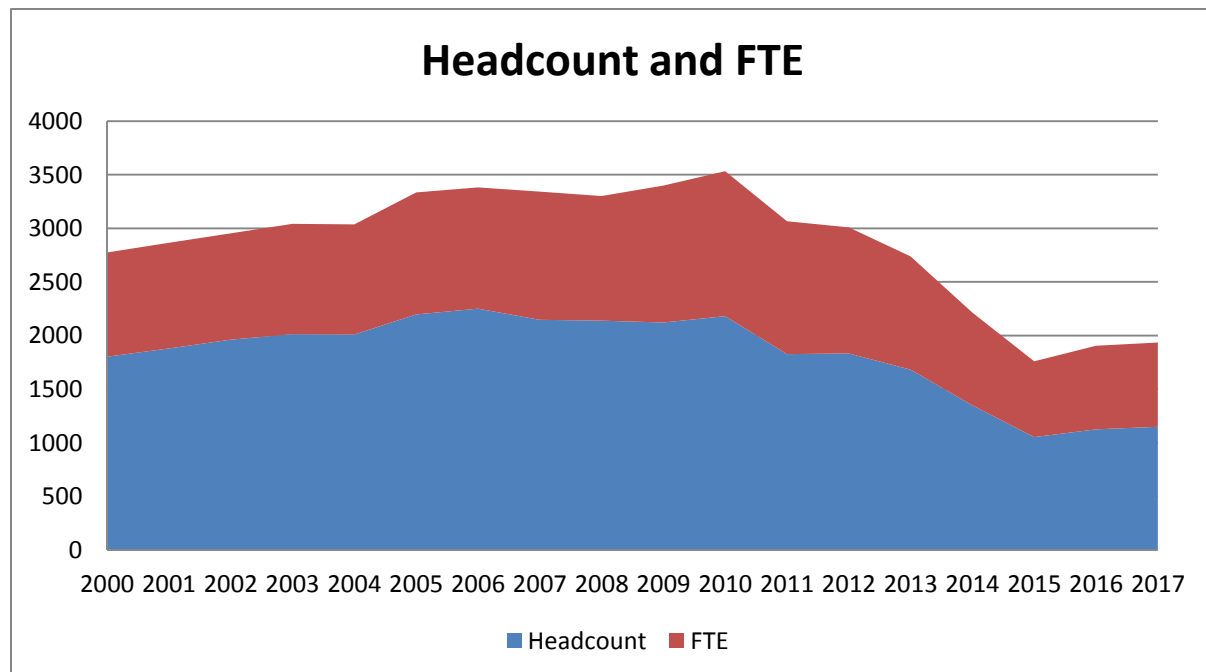


	Credit Enrollment Fall 2017	
Credit Students	1148	Student Headcount
	11792.5	Student Credit Hours (SCH)
	786.2	Full-Time Equivalent (FTE) Students
	63%	Female Students
	37%	Male Students
	9%	Native American
	72%	Hispanic
	9%	White
2%	Black	

	8%	Other
	54%	Full-Time Students (12 or more credit hours)
	46%	Part-Time Students (less than 12 credit hours)
	54%	Students with Academic Majors
	20%	Students with Career Technical Majors
	25%	Students Undecided (includes Dual Credit)
	712	Eligible Students Receiving Financial Aid
	14:1	Student/Faculty Ratio
	12 (Lower Division) 7 (Upper Division)	Average Class Size
	47	Web-Based/Hybrid Distance Ed. Classes (Fall 2017)
	324	Traditional Classes (Fall 2017)

Enrollment Trends

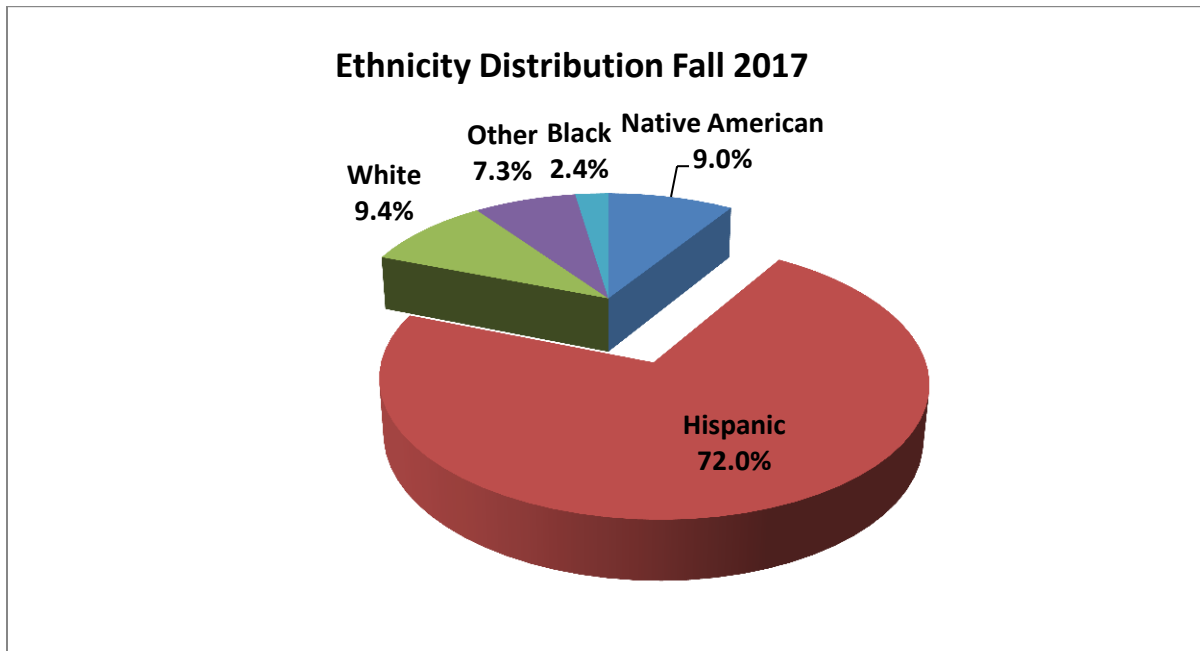
The headcount shown is the number of students at the end of the fall semester. The 2017 fall semester is only an estimate because this document was developed before the end of the semester. The full-time equivalent (FTE) is computed by taking the total number of credit hours that students are enrolled in during the semester and dividing by 15.



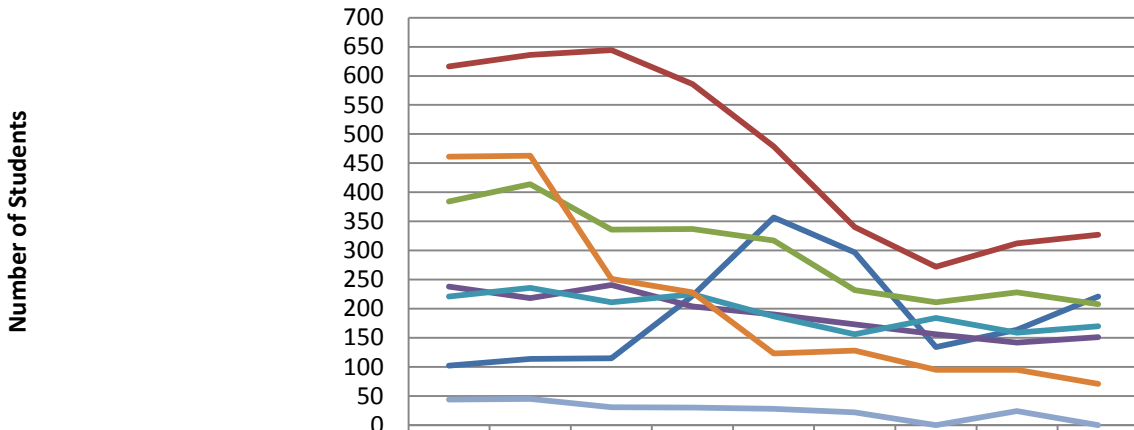
Fact	
Cumulative Fall Headcount Growth Since 2000	-654
Average Fall Headcount Growth Since 2000	-2%

Characteristics of Students

Age	Fall 2017	Percent
18 or younger	180	16%
18 to 24	480	42%
25 to 30	165	15%
31 to 35	91	8%
36 to 40	61	5%
41 to 45	31	3%
46 to 50	38	3%
51 to 55	30	3%
56 to 64	30	3%
65 and older	24	2%

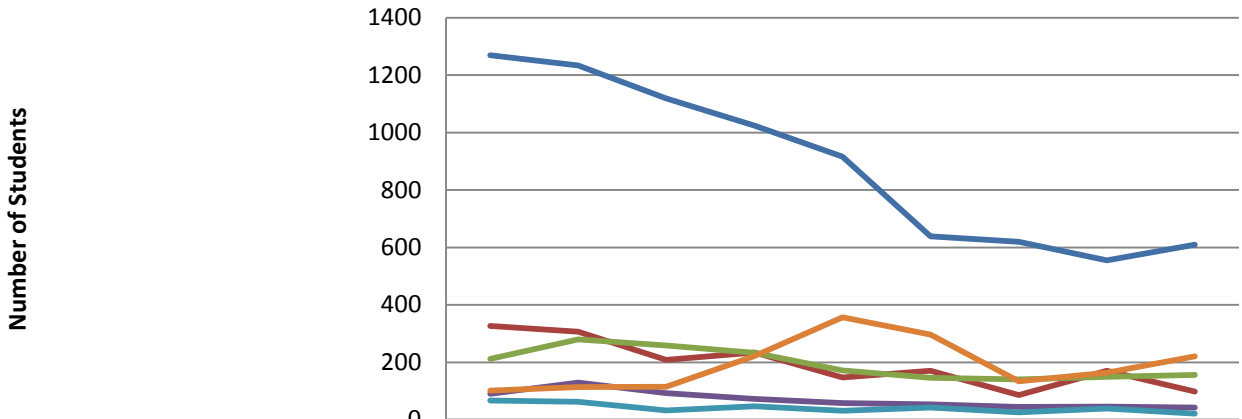


Student Class Distribution



	Fall 2009	Fall 2010	Fall 2011	Fall 2012	Fall 2013	Fall 2014	Fall 2015	Fall 2016	Fall 2017
Concurrent or High School (Level=2)	102	114	115	222	357	297	134	164	221
Freshman (Level=11)	616	636	644	586	479	340	272	312	327
Sophomore (Level=12)	384	414	336	337	317	232	211	228	208
Junior (Level=13)	238	218	241	204	190	173	156	142	151
Senior (Level=14)	221	236	211	225	187	156	184	159	170
Non Degree (Level=16)	461	463	251	228	123	128	95	95	71
Post baccalaureate Certificate (Level=17)	44	45	31	30	28	22	0	24	0

Student Admission Type

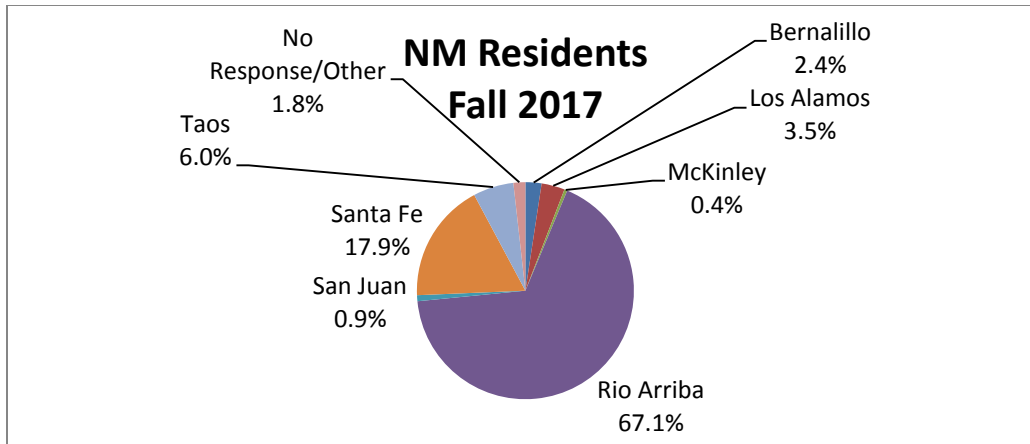


	Fall 2009	Fall 2010	Fall 2011	Fall 2012	Fall 2013	Fall 2014	Fall 2015	Fall 2016	Fall 2017
Continuing Student (Admit=1)	1269	1234	1119	1024	916	638	620	555	610
Returning Student (Admit=2)	326	306	208	234	147	171	86	171	98
New Student (Admit=3)	212	280	259	233	172	146	141	149	156
In State Transfer Student (Admit=6)	90	129	93	72	58	54	45	46	42
Out of State Transfer Student (Admit=7)	67	63	32	47	31	42	26	39	21
Concurrent Enrollment (Admit=9)	102	114	115	222	357	297	134	164	221

Residency

Student Residence	Fall 2014	Fall 2015	Fall 2016	Fall 2017
Arizona	4	3	4	2
California	13	2	5	3
Colorado	1	0	1	1
New Mexico	1304	1034	1091	1126
Texas	7	4	9	6
Other	19	9	14	10

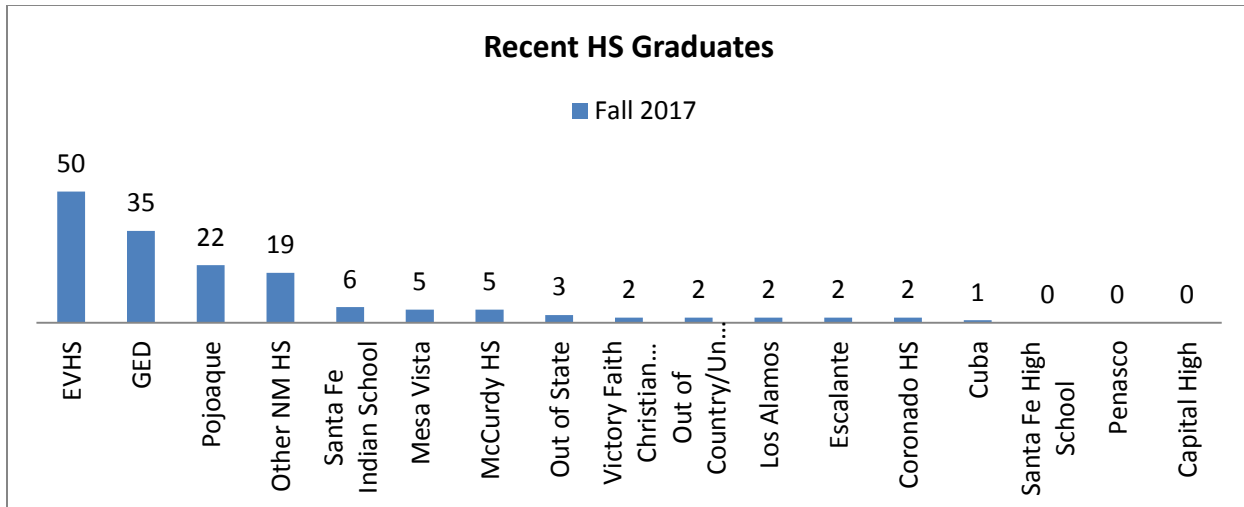
NM Residents	Fall 2014	Fall 2015	Fall 2016	Fall 2017
Bernalillo	21	24	20	27
Dona Ana	3	4	6	4
Los Alamos	48	32	38	39
McKinley	2	3	2	5
Mora	1	0	1	1
Otero	1	0	0	2
Rio Arriba	888	669	708	756
San Juan	6	11	15	10
San Miguel	4	2	3	2
Sandoval	3	1	3	2
Santa Fe	204	177	196	201
Taos	110	102	88	68
Valencia	3	3	4	3
No Response/Other	54	6	7	6



High School Recruitment

High School where New Student Graduated From:

	Fall 2013	Fall 2014	Fall 2015	Fall 2016	Fall 2017
Capital High	3	1	0	1	0
Coronado HS	4	2	1	0	2
Cuba	0	0	5	0	1
Escalante	2	3	1	1	2
EVHS	36	51	39	30	50
GED	34	29	29	44	35
Los Alamos	5	2	5	3	2
McCurdy HS	3	2	7	8	5
Mesa Vista	3	6	5	4	5
Other NM HS	25	17	15	20	19
Out of Country/Unknown	2	2	2	3	2
Out of State	9	4	8	5	3
Penasco	8	6	10	5	0
Pojoaque	25	15	5	17	22
Santa Fe High School	4	1	1	2	0
Santa Fe Indian School	6	2	6	4	6
Victory Faith Christian Academy	3	3	2	2	2
Total Number of New Students	172	146	141	149	156



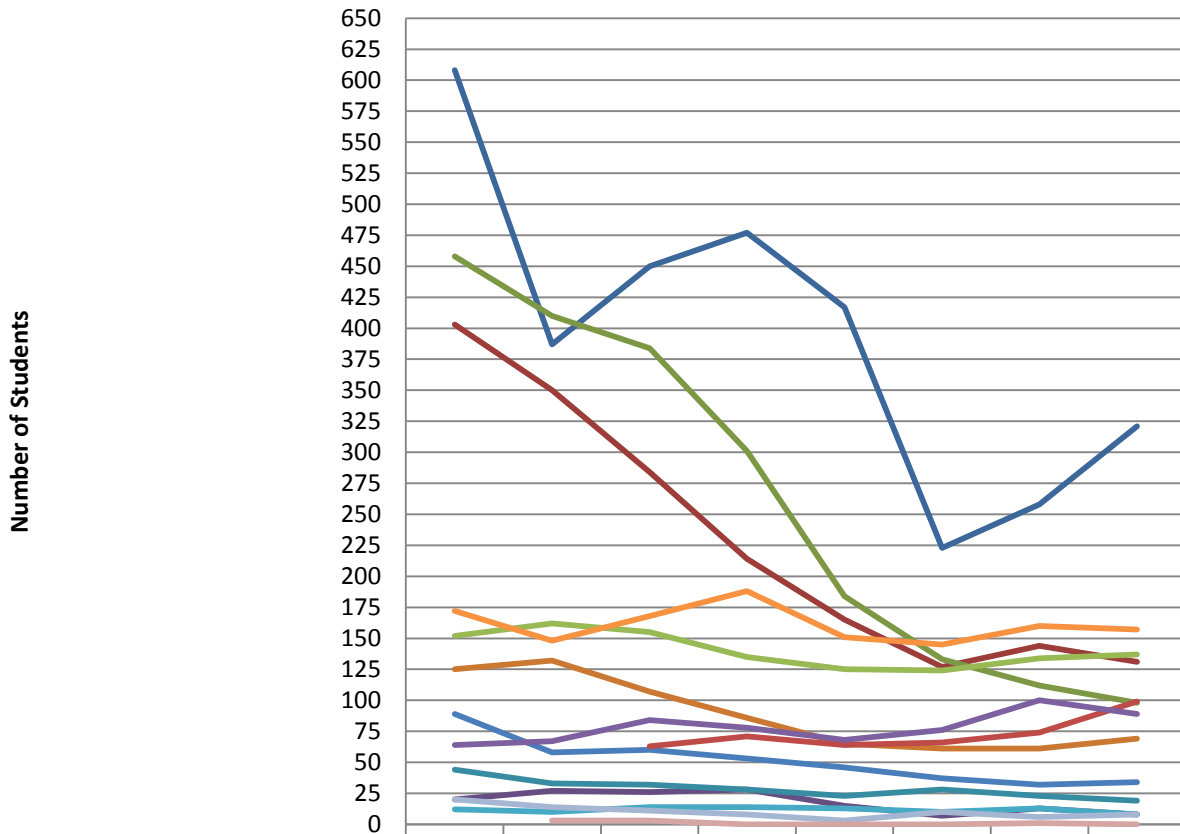
Degrees and Majors

Top 20 Majors Declared Fall Term

Major	2014	2015	2016	2017	Major	2014	2015	2016	2017
Non-Degree	417	251	258	321	Electro Mechanical Engineering	0	5	25	36
Business Administration	124	116	128	129	Nursing (ADN)	34	26	39	35
RN to BSN*	58	55	65	76	Liberal Arts	21	25	38	34
Nursing (ADN) AS*	62	53	48	55	Cosmetology/Barbering	34	38	26	27
Psychology	54	51	45	55	Early Childhood Education	19	14	21	21
Info Engineering Tech	52	57	66	49	Alternative Licensure	22	27	23	19
Environmental Science	50	56	56	47	Accounting	29	26	21	16
Criminal Justice	33	19	32	43	Project Management	1	6	15	16
Biology	45	38	44	41	Radiation Protection	3	10	12	14
Elementary Education	51	47	39	38	Music	15	12	18	13

*Students declaring this major are not necessarily admitted yet

Student Declared Degrees



	Fall 2010	Fall 2011	Fall 2012	Fall 2013	Fall 2014	Fall 2015	Fall 2016	Fall 2017
Non Degree	608	387	450	477	417	223	258	321
Associate of Arts	403	350	284	214	165	127	144	131
Associate of Applied Science	458	410	384	301	184	133	112	98
Associate of Engineering	20	27	26	28	15	7	13	8
Alternative Licensure	44	33	32	28	23	28	23	19
Associate of Science	125	132	107	86	65	61	61	69
Bachelor of Arts	89	58	60	53	46	37	32	34
Bachelor of Arts in Integrated Studies			63	71	64	66	74	99
Bachelor Business Administration	152	162	155	135	125	124	134	137
Bachelor of Engineering	64	67	84	78	68	76	100	89
Bachelor of Music	12	10	14	14	13	10	13	8
Bachelor of Science	172	148	168	188	151	145	160	157
Certificate	20	14	11	8	3	10	6	8
Graduate Certificate		3	3	0	0	0	1	0